



VIEWRAIL SIGNATURE POSTS



Signature Posts

Viewrail's Signature Post elevates any deck, staircase, or balcony with lasting value and modern elegance. Our Signature Post has been the cornerstone of our railing from the very beginning.

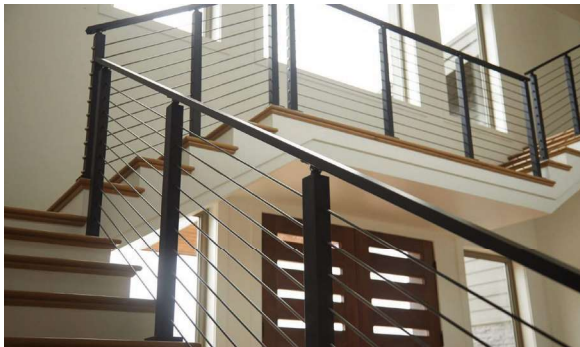
Starting with the best materials, engineering for strength, and planning for ease-of-installation, these architecturally-correct posts check off all the boxes. These materials include 2205 marine-grade stainless steel, 304 stainless steel, and aluminum.

Additionally, our Signature Posts are the most versatile posts on the market, offering four different surface mount applications and three fascia mount applications. This makes customization to your space easy, minimizing the footprint of the railing area and maximizing functionality.

Also, our Signature Posts can be paired with all of our infill options: cable, endurance, onyx rods, glass clips, or even modern balusters. Each of the infill options are supported by our sleek, proprietary hidden fastener designs. This increases the on-site installation of the product.

Finally, our Signature Posts are built to last, and backed by one of the best warranties in the industry: a 10-year structural warranty, and up to a 10-year finish warranty.

Viewrail Signature Posts



Tech Specifications

Material: 6061 Aluminum (Aircraft Grade), 304 SS, 2205 SS

Finishes: Custom powder coated to order or brushed stainless

Height: Up to 42" Tall (System Height)

Standard Spacing: 4' on center

Mount Type: Core Drilled, Surface Mount, Special Application, Side Mount or Bump Out

Post Size: 2" X 2" Tube

Infill Options: Cable, 2205 Rods, or Glass

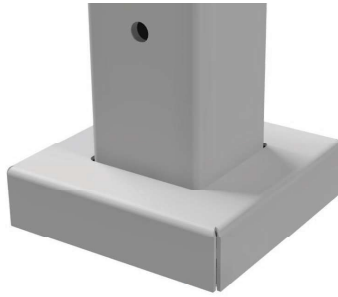
Compliance: ICC, IBC International Building Code® (2015,2018,2021), IRC International Residential Code® (2015, 2018, 2021)

Mounting Styles



Core Drill

The Core drill post is designed to be plunged into concrete. The post is 6 1/4" long at the base.



Surface Mount

The Surface Mount post plate is the flagship post product. It sits on a 3.75" X 3.75" plate and is used for a majority of surface mount projects.



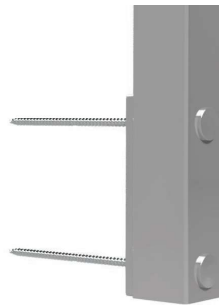
Special Application

The special application post foot plate was designed to be mounted on solid surfaces like concrete or stone. The footplate is 4.5" X 4.5".



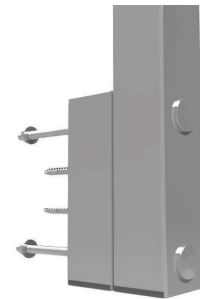
Side Mount Post

The standard side mount post sits on a 6" X 5-1/2" plate. Depending on the post composition the plate ranges from .3125" to .375" thick. The aluminum is a bolt together style and the stainless is welded on.



Slim Side Mount

The slim side mount post was designed similar to the standard side mount post but with a minimal footprint. The aluminum is a bolt together that sticks.



Bump Out Side Mount

The bump out side mount post was designed to go around deeper fascias. The mounting plate is 2" deep and 6" tall.

Post Top Styles

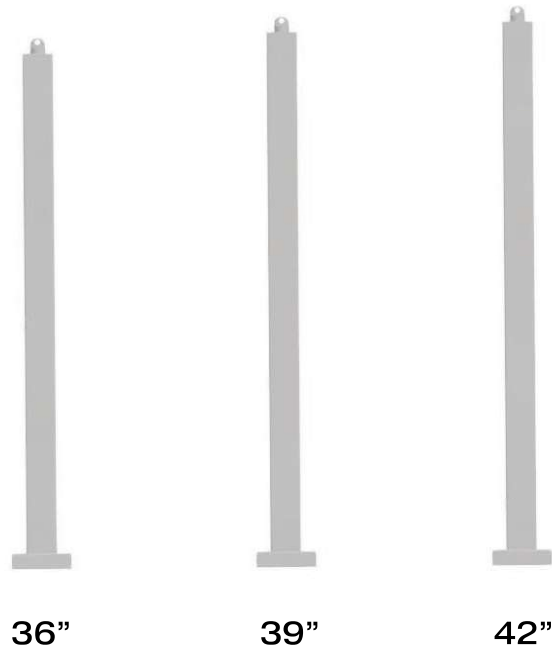


Flat Top Post



Universal Top Post

Standard System Heights



Post Gauges

